

Customer :

customer

Customer part :

customer part

Comment :

Comment

S1=1.58

S2=2.19

Tmax=455

Tp S2=494.0

PI=0.42

HI=78

Sample =1677.10

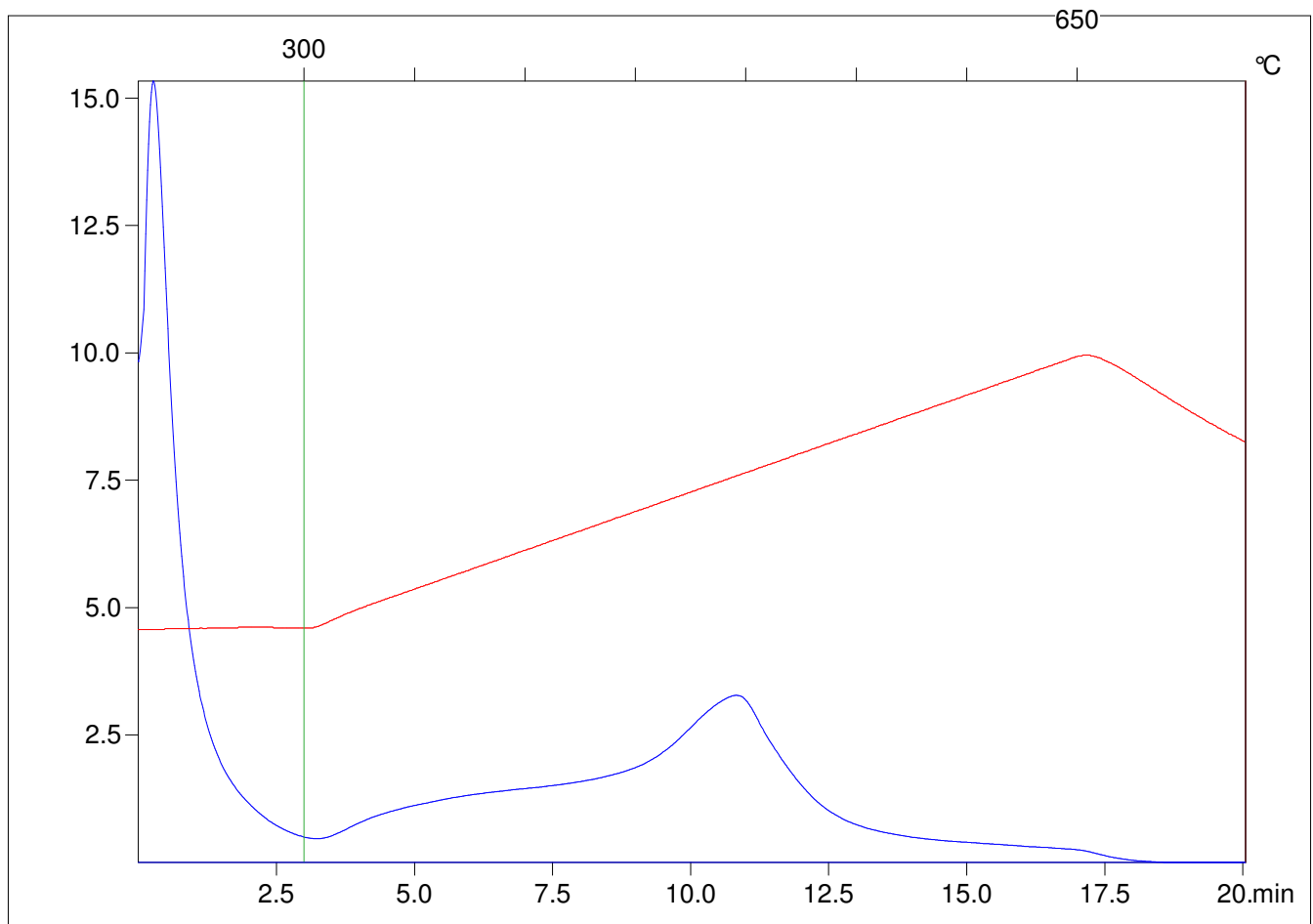
Method =Bulk Rock

Cycle=Basic

KFID(10*9)=1444

Qty =70.3

TOC=2.81



C:\VINC\PK1_1792\PK027.R00 : FID pyrolysis graphic

State

Pyro Status

Oxi Status